

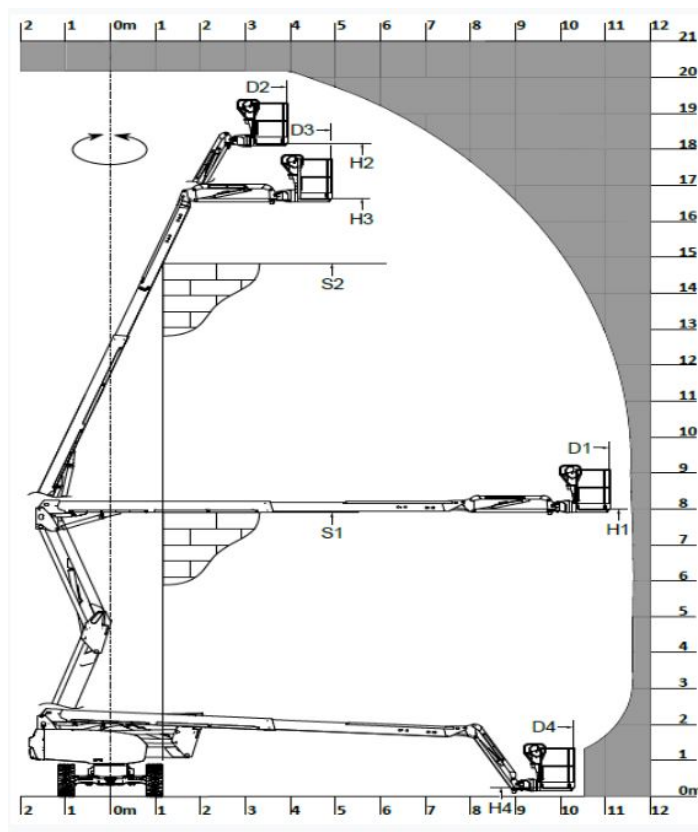
Technical sheet

200 ATJ E PREVIEW

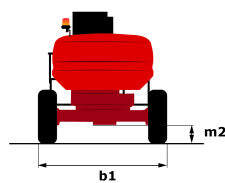
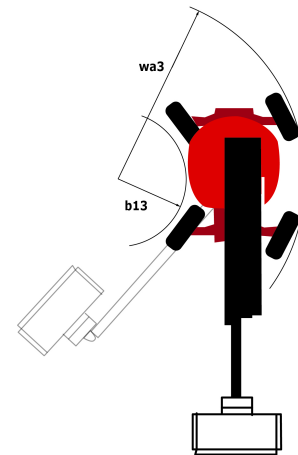
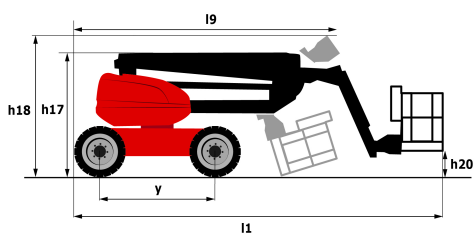
Articulated Electric Aerial Work Platform with jib



Capacities	Metric
Working height	20 m
Platform height	18 m
Horizontal outreach	11.57 m
Overhang	7.90 m
Pendular arm rotation (top/bottom)	65 ° / -60 °
Platform capacity	230 kg
Turret rotation	350 °
Platform rotation (right/left)	90 ° / 90 °
Number of people (inside/outside)	2 / 2
Weight and dimensions	
2.1 - Platform weight*	7200 kg
2.2 - Platform dimension (L x l)	1.5 x 0.8 m
b1 - Overall width	2.32 m
l1 - Overall length	8.34 m
l9 - Overall length (folded)	6.06 m
h17 - Overall height	2.45 m
h18 - Overall height (folded)	2.38 m
a7 - Counterweight offset (turret at 90°)	0.64 m
b13 - Inner turning radius	2.42 m
wa3 - Outer turning radius	5.31 m
m2 - Ground clearance at center of frame	0.38 m
y - Wheelbase	2.30 m
Performances	
Travel speed	5 km/h
Working speed	0.70 km/h
Gradeability	45 %
Permissible leveling	3 °
Tires	
Type of tires	TyresType.No Marking
Dimensions	910 x 365
Drive wheels (front/rear)	2 / 2
Steering wheels (front/rear)	2 / 0
Braking wheels (front/rear)	0 / 2
Engine	
Electric engine power rating	12 kW
Batteries (C5)	48 V / 460 Ah
Integrated charger	48 V / 60 Ah
Miscellaneous	
Maximum available hydraulic pressure	240 bar
Capacity of hydraulic tank	25 l



Dimensional drawing



Equipment

Standard

230V Predisposition

4 simultaneous movements

4 wheel drive

Active oscillating front axle

Audible alarm and illuminated indicator lamp (leveling, overload, lowering)

Backup electrical pump

CAN bus technology

Dead man pedal

Differential locking on rear axle

Emergency stop button in platform and on frame

Traction battery

Integrated diagnostic assistance

Multi-voltage integrated charger

Tool box in platform

Fully galvanized basket with demountable floor

Travel possible at maximum height

Information screen on the control panel

Protective cover for control panel

Rotating beacon light

Non-marking tyres

Optional

Lights for loading/unloading machine

110 or 230V plug with differential circuit-breaker

Air predisposition

Beep on every movement

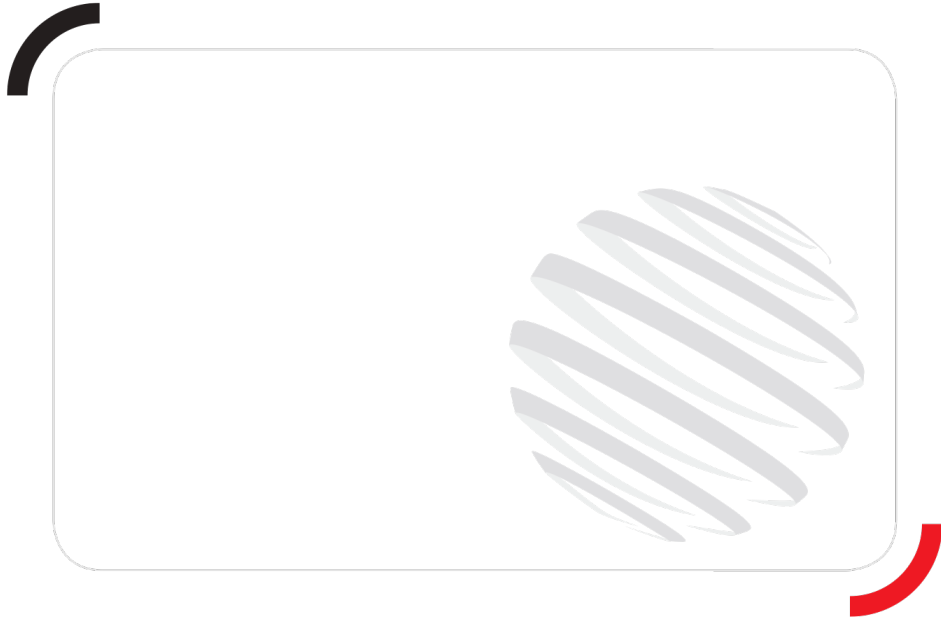
Beep upon travel

Biodegradable oil

Coded anti-start

SMS : Safe Man System

Galvanized basket 1,800 mm



Siège Social
430 rue de l'Aubinière - 44150 Ancenis Cedex - France
Tel: +33(0)2 40 09 10 11 - Fax: +33 (0)2 40 09 10 97
www.manitou.com



This brochure describes versions and configuration options for Manitou products which may be fitted with different equipment. The equipment described in this brochure may be standard, optional or not available depending on version. Manitou reserves the right to change the specifications shown and described at any time and without prior warning. The manufacturer is not liable for the specifications given. For more information, contact your Manitou dealer. Non-contractual document. Product descriptions may differ from actual products. List of specifications is not comprehensive. The logos and visual identity of the company are the property of Manitou and may not be used without authorisation. All rights reserved. The photos and diagrams contained in this brochure are provided for information only.

MANITOU BF SA - Limited company with board of directors - Share capital: 39,547,824 euros - 857 802 508 RCS Nantes