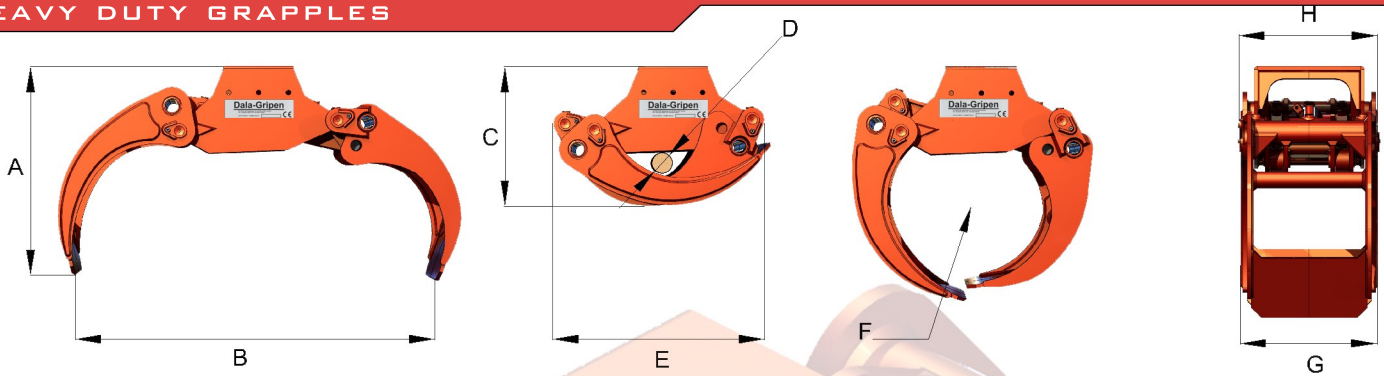


# Dala-Gripen

ENTREPRENADGRIPAR  
HEAVY DUTY GRAPPLER



MODEL			DGE12	DGE20	DGE25	DGE28	DGE35	DGE42
A	Height when open	mm	495	550	620	745	770	845
B	Max opening	mm	1000	1250	1400	1435	1820	2000
C	Height closed	mm	350	425	480	530	610	620
D	Min gripping diameter	mm	57	73	90	105	125	125
E	Length when closed	mm	545	645	730	810	930	1045
F	Gripping area	m <sup>2</sup>	0,16	0,2	0,25	0,28	0,35	0,42
G	Width	mm	264	325	405	420	485	490
H	Max width	mm	264	335	410	430	495	500
Weight		kg	56	88	145	195	275	290
Max load		kg	1500	2000	3500	3500	5000	5000
Max working pressure		Bar	200	250	250	250	250	250
Cylinder force		kN	35,3	71,6	115,5	115,5	146,2	180,5
Gripping force arms tip		kN	7	12,1	19,3	19,2	25,4	32,8
Opening time 70l/min		s	0,16	0,28	0,62	0,5	0,8	1,3
Closing time 70l/min		s	0,24	0,46	0,83	0,9	1,3	1,8
Order code			DGE12	DGE20	DGE25	DGE28	DGE35	DGE42

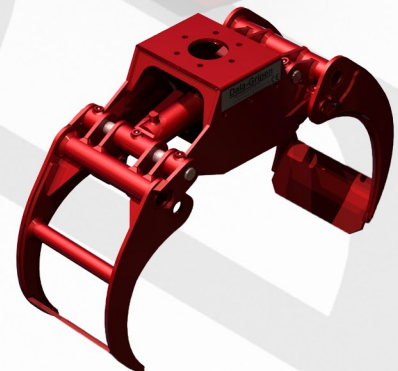
DGE 12



DGE 20



DGE 25-42



Sit Right AB  
Adress: Näsrovägen 36,  
SE-780 53 NÅS, Sweden  
e-post: mail@sit-right.se  
Telefon: 0281-300 30  
www.sit-right.se

**sitRIGHT**